

Technical Datasheet

MC10-DO3

1 Introduction

The expansion card included in this document is suitable for the following product groups:

- Fume Cupboard Controller (e.g. FC400)
- Fume Cupboard Monitor (e.g. FM400)
- Volume Flow Controller (e.g. VAV400)

MC10 expansion cards are manufacturer-specific and can only be used in the specified product groups. They can be replaced, removed, and added, but must be compatible with the respective device. This allows the device to support more functions than originally provided. The parameters can be checked and adjusted within the respective product group using a PC or laptop and the SCHNEIDER commissioning software PC4500.



Notice: Connecting the extension module

Always unplug the power cord or disconnect the device from the mains before inserting or removing the extension module.

W0022



Notice: Material damage due to electrostatic discharge

The electronics of the MC10-DO3 can be damaged by electrostatic discharge. Avoid direct contact with components and circuit traces on the circuit boards. Before touching, perform a potential equalization by touching metallic surfaces. The surfaces must be grounded to ensure potential equalization.

W0048

2 Expansion Card Type MC10-DO3

Technical Data	
Power Supply	via the Baseboard Slot (24 V DC)
Number of Outputs	3 Relays
Contact Type	Normally Open Contact (NO)
Nominal Voltage	24 V AC / 24 V DC
Nominal Current	3 A, external Fuse required
Nominal Load	Maximum 300 W (resistive)
Wire Cross-Section (solid/flexible)	0.2 to 2.5 mm ²
Ordering Code	
MC10-DO3	Expansion Card - 3x Digital Output

Table 1: Technical Data MC10-DO3

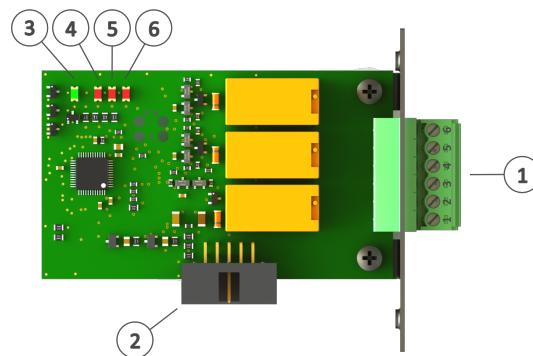
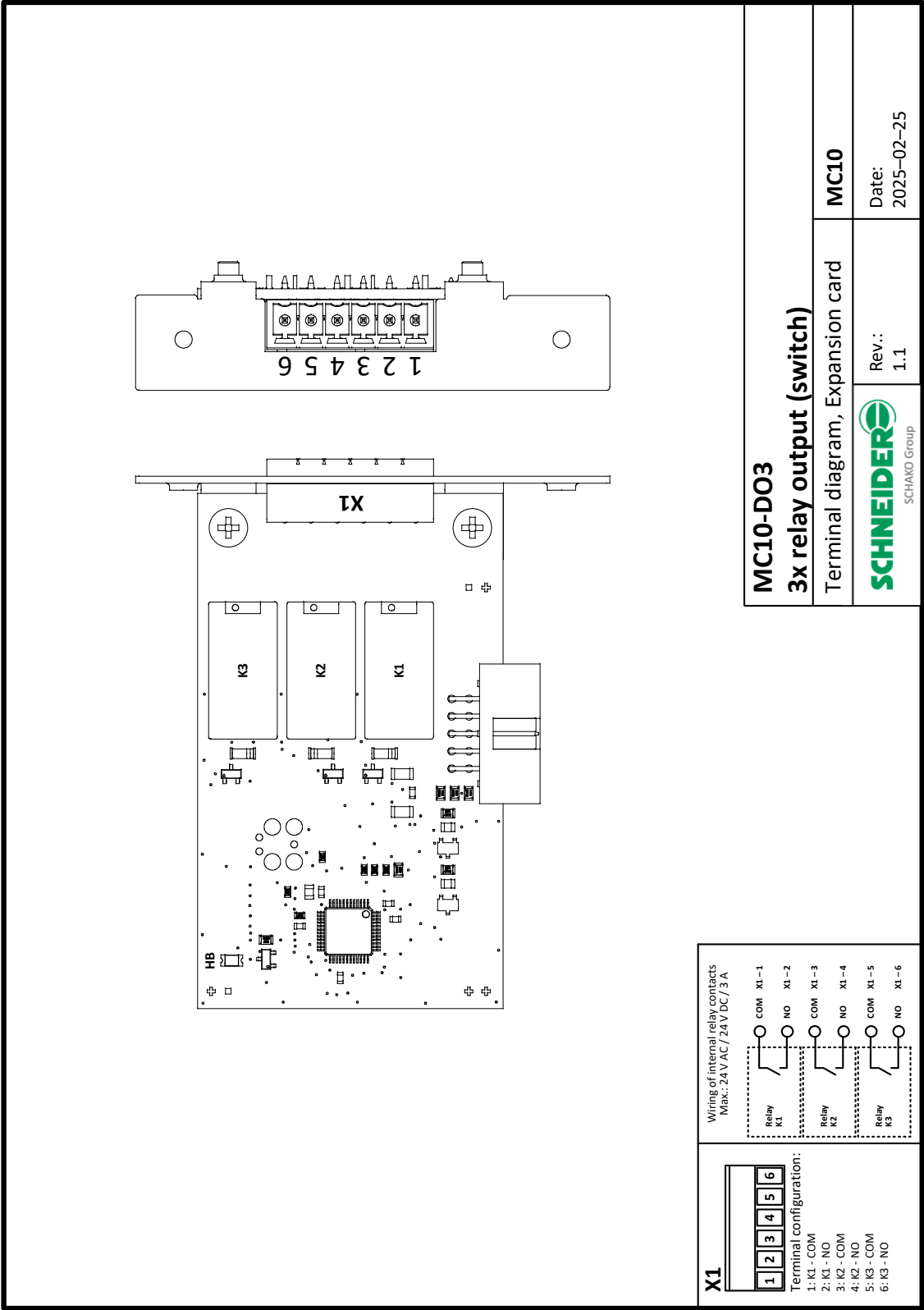


Figure 1: Overview MC10-DO3

No.	Function	Meaning
1	Terminal X1	3x Digital Output (COM / NO)
2	MC10	Expansion Slot MC10
3	HB-LED	Operating Status Indicator
4	LED-Relay K1	Status Indicator for Relay K1
5	LED-Relay K2	Status Indicator for Relay K2
6	LED-Relay K3	Status Indicator for Relay K3

Table 2: Legend MC10-DO3

3 Terminal Diagram MC10-DO3





The information and data contained in this documentation have been compiled to the best of our knowledge and in accordance with the current state of the art (subject to technical changes). The currently valid version applies. The proven properties of SCHNEIDER products are based on the use of the products recommended in this documentation. Diverging situations and individual cases are not taken into account, so that we cannot assume any warranty and liability.

As of February 2025

Version: 02/2025

Do you have any questions? We look forward to your message:

Tel. +49 6171 88479-0

info@schneider-elektronik.de