

Technical Datasheet

MC10-MOD



SCHAKO Group

1 Introduction

The extension module included in this document is suitable for the following product groups:

- Fume hood controller (e.g. FC400)
- Fume hood monitor (e.g. FM400)
- Volume flow controller (e.g. VAV400)

MC10 extension modules are manufacturer-specific and can only be used in the specified product groups. They can be replaced, removed, and added, but must be compatible with the respective device. This allows the device to support more functions than originally provided. The parameters can be checked and adjusted within the respective product group using a PC or laptop and the SCHNEIDER commissioning software PC4500.



Notice: Connecting the extension module

Always unplug the power cord or disconnect the device from the mains before inserting or removing the extension module.

W0022



Notice: Material damage due to electrostatic discharge

The electronics of the MC10-MOD can be damaged by electrostatic discharge. Avoid direct contact with components and circuit traces on the circuit boards. Before touching, perform a potential equalization by touching metallic surfaces. The surfaces must be grounded to ensure potential equalization.

W0048

2 Extension Module Type MC10-MOD

Technical Data	
Power Supply	via the baseboard slot
Interface	RS-485 (ANSI TIA/EIA-485)
Protocols	Modbus RTU
Number of Lines	4 (half-duplex + GND + shield)
Speed	up to 115 kbit/s
Galvanic Isolation	up to 15 kV
Driver	1/8 Load
Wire Cross-Section (solid/flexible)	0.2 to 2.5 mm ²
Ordering Code	
MC10-MOD	Extension module Modbus RTU

Table 1: Technical Data MC10-MOD

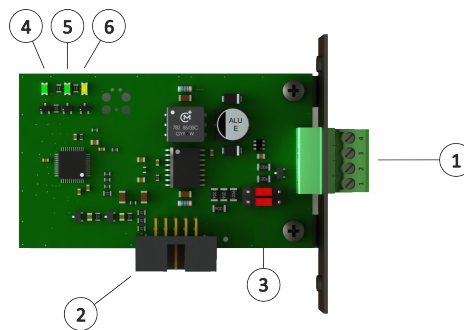


Figure 1: Overview MC10-MOD

No.	Function	Meaning
1	Terminal X1	Modbus RTU
2	MC10	Extension slot MC10
3	Termination	Connection to RS-485 bus system
4	HB LED	Operating status indicator
5	RX LED	Communication status indicator (Receive)
6	TX LED	Communication status indicator (Transmit)

Table 2: Legend MC10-MOD



The information and data contained in this documentation have been compiled to the best of our knowledge and in accordance with the current state of the art (subject to technical changes). The currently valid version applies. The proven properties of SCHNEIDER products are based on the use of the products recommended in this documentation. Diverging situations and individual cases are not taken into account, so that we cannot assume any warranty and liability.

As of February 2025

Version: 02/2025

Do you have any questions? We look forward to your message:

Tel. +49 6171 88479-0

info@schneider-elektronik.de